



INSTALLATION - Installazione



RUBBER FITTINGS - RACCORDI IN GOMMA



SLEEVES
Manicotti

Ø mm	Ref.
30x30	20070300
40x30	20070301
36x36	50000399
38x38	20090006
40x40	20070302
50x40	20070303
50x50	20070304
63.5x50	20070305*
63.5x63.5	20070306
68x68	20070299
73x61	50000457
76.2x76.2	20070307*
90x73	50000538
90x90	20070308
110x110	50000542
125x125	50000543

*Rolled edges*Bordi arrotolati



BENDS WITH LARGE RADIUS
Curve largo raggio

Ø mm	Ref.
29x29	50000417
38x38	50000210
29x38	50415/04



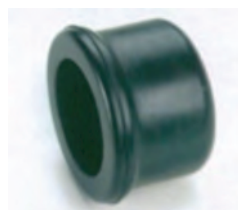
REDUCED SLEEVES
Manicotti ridotti

Ø mm	Ref.
37x23,5	50000384
37x30,5	50000382
45x30,5	50000393
45x38	50000383
48x38	50000625
48x30	50000626 (corr FW 030264)



TEE SLEEVES
Manicotti a "T"

Ø mm	Ref.
30x30x30	50000376
38x38x38	20070309
40x40x40	20090009
50x50x38	50000392
50x50x50	20070310
61x61x61	50000407
73x73x73	50000431



CLOSED STOPPER
Tappo chiuso

Ø mm	Ref.
Ø32	50000260
Ø38	20091860
Ø50	20091870
Ø63	50000308
Ø73	50000307



ELBOWS
Curve

Ø mm	Ref.
8x16	00300368
12x30	00300372
13x28	50000374
16x16	50000612
18x18	50408/02
18x35	50036/54
25x25	20090007
28x32	00403543
(fitting WF 0018-1681-700)	
30x30	20070311
30x40	20070312
33x40	50000582
36x36	50000423
38x38	20090008
38x49	50000365
40x40	20070313
49x61	50000411
50x50	20070314
61x73	50000410
63x63	20070315
70x70	20070317
76x76	20070316

STOPPER WITH INOX EXIT Ø16
 Tappo con uscita inox ø16



Ø mm	Ref.
Ø 32	5016/320
Ø 38	20090012
Ø 50	20090013
Ø 63	5016/318
Ø 76	5016/319

CONICAL STOPPER
 Tappo conico



Ø mm	Ref.
Ø 29X32 H.31	50000362
Ø 35X39 H.38	20093630
Ø 46X52 H. 41	20093640

PLUG
 Tappo



Ø mm	Ref.
Ø int. 26 Ø est. 54x77	50055/04
Ø int. 30 Ø est. 54x77	50055/05

BUTTERFLY VALVE
 Valvola butterfly



Ø mm	Ref.
Ø 38	20090016
Ø 50	20090017

BALL
 Sfera piena



Ø mm	Ref.
Ø12	522/0089
Ø20	522/0022
Ø22	522/0032
Ø25	522/0025
Ø30	522/0031
Ø35	522/0037
Ø40	522/0040
Ø90	522/0090



RUBBER BEND 60°
 Curva gomma 60°
00622012 15,5 MM
00622105 12,5 MM



RUBBER ELBOW (S/S NIPPLE)
 Curva gomma (nipplo inox)
00630111 32X22
00630190 45X18



REDUCING SLEEVE
 Riduzione gomma
00630264 50X32



20093652
RUBBER STOPPER DL T.
96666302
 Tappo gomma DL T.
 96666302



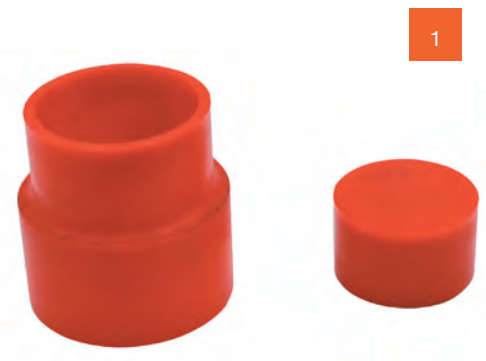
00800151
RUBBER STOPPER
Ø16 MM WITH CHAIN
CORR. GM D381172
 Tappo gomma ø16 con catena
 corr. GM D381172



50000239
PLUG Ø14.5 INT.
 Tappo ø14.5 Int.



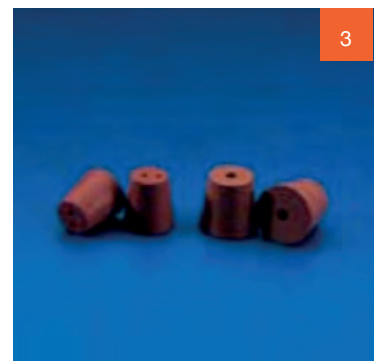
50000339
PLUG
 Tappo



1



2



3

"ADIPRENE" FITTINGS
Manicotti in adiprene

Art	Ref.	Sup.	Inf.	H mm
1	00100560	2 1/2"x2 1/2" (75x75 mm)		
1	00100561	3"x 2 1/2" (90x75 mm)		
1	00100562	2"x2 1/2" (60x75 mm)		
1	00100563	2"x2" (60x60 mm)		
1	00100564	3"x2" (90x60 mm)		
1	00100565	3"x3" (90x90 mm)		
1	00100566	1 1/2"x1 1/4" (50x40 mm)		
1	00100567	1 1/2"x1" (32x50 mm)		
1	00100568	1 1/4"x1" (32x40 mm)		
1	00100571	1 1/4"-1 1/4" (40x40 mm)		
1	00100569	2"x1 1/4" (60x40 mm)		
1	00100570	2"x1 1/2" (60x50 mm)		
1	00300108	4"x4" (110x110 mm)		
1	00300109	4"x3" (110x90 mm)		
1	00300110	4"x2" 1/2 (110x75 mm)		

CONICAL STOPPERS
Tappi conici

Art	Ref.	Sup.	Inf.	H mm
2	209K1129	9	6	18
2	00300579	10	7	17
2	209K1131	12	9	18
2	209K1132	13	10	18
2	209K1133	15	11	18
2	209K1134	16	12	20
2	209K1135	18	13	22
2	209K1136	20	14	24
2	209K1137	23	16	26
2	209K1138	26	19	28
2	209K1139	30	21	29
2	209K1140	32	25	34
2	209K1142	37	28	37

CONICAL STOPPERS
Tappi conici

Art	Ref.	Sup.	Inf.	H mm
2	209K1143	42	32	41
2	209K1144	45	34	45
2	209K1145	48	37	50
2	209K1146	54	41	53
2	209K1147	60	43	60
2	209K1148	65	52	70
2	00300580	70	57	70
2	00300581	75	60	70
2	00300582	80	67	70
2	00300583	85	71	70
2	00300584	100	86	70
2	00300585	105	90	70
2	00300586	120	100	90

"ADIPRENE" STOPPERS
Tappi in adiprene

1	00300118	4" (110 mm)
1	00100572	3" (90 mm)
1	00100573	2" (60 mm)

20186060
PRESSURE COMBI TAP Ø32
Rubinetto Combi a pressione Ø32
Corr. 95258181

00800264
RUBBER BEND Ø40 WF ST.
CORR. 7009-2360-010
Curva gomma Ø40 T. WF CORR. 7009-2360-010

00800265
RUBBER BEND Ø50 WF ST.
CORR. 7009-2360-000
Curva Gomma Ø50 T. WF CORR. 7009-2360-000

70223866
RUBBER TEE 40/40/50 T. WF
TEE gomma 40/40/50 T. WF
CORR. 7009-2357-010

00800257
RUBBER PLUG Ø40 WF TYPE
CORR. 0018-1637-700
Tappo Gomma Ø40 MM, T. WF
CORR. 0018-1637-700

00800258
RUBBER PLUG Ø50 WF TYPE
CORR. 7009-2347-000
Tappo Gomma Ø50 MM, T. WF
CORR. 7009-2347-000

S/S AND PLASTIC MILK TAPS - RUBINETTI LATTE INOX E PLASTICA

DL COMBI COCK SYSTEM

Sistema combi cock tipo dl

20081110

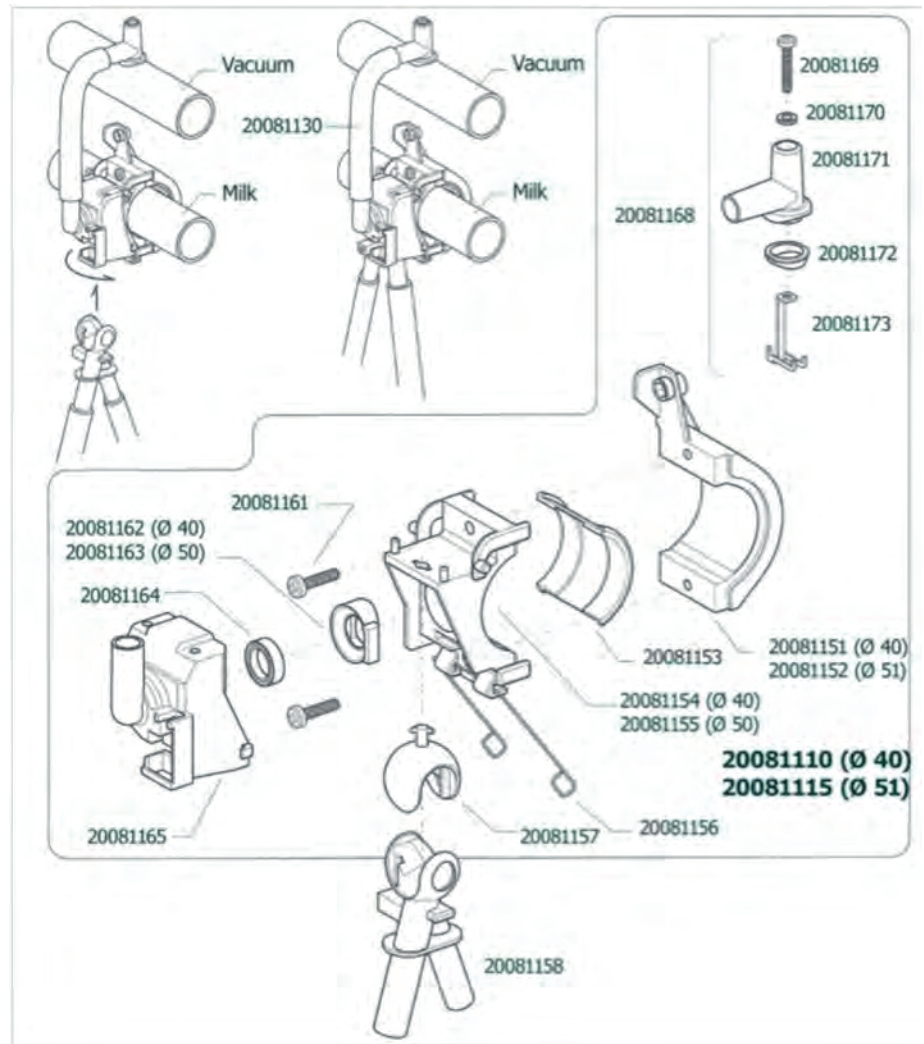
COMPLETE TAP Ø40

Rubinetto completo ø40

20081115

COMPLETE TAP Ø51

Rubinetto completo ø51



REF.	DES.
20081130	TRANSP. TUBE Tubo trasparente 14x24 (0,43 m)
20081151	SUPPORT Ø 40 - Supporto ø40 (corr. 968485-01)
20081152	SUPPORT Ø51 - Supporto ø51 (corr. 968298-01)
20081153	RUBBER JOINT - Guarnizione Gomma
20081154	MAIN BODY Ø 40 - Corpo principale Ø 40 (corr. 968484-01)
20081155	MAIN BODY Ø 51 - Corpo principale ø 51 (corr. 968297-01)
20081156	FASTENING WIRE Gancio
20081157	BALL - SEMISFERA (corr. 997519-01)
20081158	VACUUM AND MILK Y - Presa latte/vuoto (corr. 997520-01)
20081161	SCREW - Vite
20081162	JOINT FOR BODY Ø40/46,5 Guarnizione interna 40/46,5 (corr. 965423-01)

REF.	DES.
20081163	JOINT FOR BODY Ø52 Guarnizione interna ø52 (corr. 968900-01)
20081164	COVER JOINT - Guarnizione rubinetto latte (corr. 96850101)
20081165	COVER - Coperchio (corr. 998260-01)
20081168	CONNECTION SET FOR VACUUM Set connessione (corr. 995224-80)
20081169	SCREW M-5X30 - Vite M-5x30
20081170	RUBBER O'RING - O'ring gomma
20081171	VACUUM KNEE - Curva vuoto (corr. 988281-01)
20081172	JOINT FOR KNEE - Guarnizione Curva
20081173	FASTENING METAL - Gancio Metallo



GASKETS FOR TAPS WF
 Guarnizioni per rubinetti WF

1	20070331	Ø 40
1	20070332	Ø 52

GASKETS FOR TAPS DL
 Guarnizioni per rubinetti DL

2	20070333	Ø 40
2	20070334	Ø 52

GASKETS FOR WF TAPS
 Guarnizioni per rubinetti WF

3	20070114	corr. 7009-4794-130
4	20070115	

S/S MILK TAP - Rubinetto inox

Art.	FOR TUBE - Per tubo	HOLE - Foro
5	00100139 38/52	Ø 14-16
5	00100140 63/76	Ø 14-16
5	00100141 38/52	Ø 16-18
5	00100142 63/76	Ø 16-18

PLASTIC MILK TAP - Rubinetto plastica

Art.	FOR TUBE - Per tubo	HOLE - Foro
6	00100143 40	Ø 14
6	00100144 50	Ø 14
6	00100145 40	Ø 16
6	00100146 50	Ø 16

GASKET FOR PLASTIC MILK TAP
 Guarnizione rubinetto latte plastica

7	00100658	INTERNAL
8	00100659	EXTERNAL

90° S/S SLIDING OPENER
 Aprivalvola inox curvo a 90°

9	00100147	Ø 16 int.
9	00111147	Ø 14 int.
9	00121247	Ø 16 INT. INVERTED, DL MODEL
9	00131347	Ø 14 INT. INVERTED, DL MODEL

GASKET FOR MILK TAP
 Guarnizione per rubinetto latte

10	00100149	Ø 15 - UPPER - Superiore
10	00100757	Ø 17 - UPPER - Superiore
11	00100150	Ø 16 - LOWER - Inferiore
11	00100966	Ø 18 - LOWER - Inferiore

S/S SLIDING PLATE
 Tappo coprirubinetto inox

PLASTIC MILK TAP Ø40 MM FITT.
 WF - Rubinetto plastica
 Ø40 mm tipo WF

S/S SLIDING OPENER 90° Ø16, WF TYPE - Aprivalvola 90° Ø 16, WF TYPE

MILKTAP INLET
 Attacco rubinetto latte T.
 Corr. DL 956758-01

NICKELED VACUUM TAPS WITH STAINLESS STEEL SCREWS RUBINETTI DEL VUOTO NICHELATI (CON VITI INOX)



1



2



3



4



5



6



7



8



9



10



11



12



13

VACUUM TAP WITH FLANGE

Rubinetto con flangia

1	00100048	3/4"-1" ANGLE - Curvo
1	00111148	1 1/4"- 1 1/2" ANGLE - Curvo
1	00111149	2" ANGLE - Curvo
2	00100049	3/4"-1" STRAIGHT - Dritto

THREADED VACUUM TAP

Rubinetto filettato

3	00100052	1/2" ANGLE - Curvo
3	00100053	3/8" ANGLE - Curvo
4	00100050	1/2" STRAIGHT - Dritto
4	00100051	3/8" STRAIGHT - Dritto

VACUUM VALVE 1/2" FOR TUBE

Pres a vuoto 1/2" per tubo

5	00100054	3/4"-1"
5	00100055	1 1/4"- 1 1/2"
5	00100056	2" (CORR. 7009-3270-050)

WHITE GASKET FOR TAP

Guarnizione bianca per rubinetto

6	00111150	
---	----------	--

PLASTIC THREADED STRAIGHT

VACUUM TAP 1/2"

Rubinetto plastica filettato
diritto 1/2"

7	00100928	
---	----------	--

PLASTIC STRAIGHT VACUUM

TAP WITH FLANGE 3/4"-1"

Rubinetto plastica diritto con
flangia 3/4"-1"

8	00100929	
---	----------	--

BALL VACUUM TAPS

Rubinetti a biglia

9	00100931	3/4"-1"
9	00100932	1 1/4"- 1 1/2"
10	20070102	1/2"

CONNECTING NIPPLE

Tubetto di connessione
Corr. 7027-2940-040

11	00100933	
----	----------	--

SPRING
Mollettina a ragno

12	00100934	
----	----------	--

GASKET
Guarnizione

13	20070103	
----	----------	--

STAINLESS STEEL AND PLASTIC FITTINGS FOR PIPELINE RACCORDI INOX E PLASTICA PER TUBAZIONI



COMPLETE PLASTIC FITTING Raccordo completo in plastica	
00100194	Ø 40
00100196	Ø 52
00300308	Ø 63
20090010	GASKET/Guarnizione per 00100194
20090011	GASKET/Guarnizione per 00100196
00300309	GASKET/Guarnizione per 00300308



COMPLETE S/S EXPANDING FITTING Raccordo completo inox a mandrinare	
00100181	DN 10/25
00100182	DN 32
00100183	DN 40
00100184	DN 50
00100185	DN 60
00646400	DN 65
00100186	DN 80
00100187	DN 90/100
00100188	SMS Ø 25,4 = 1"
00100189	SMS Ø 38,1 = 1 1/2"
00100190	SMS Ø 50,8 = 2"
00100191	SMS Ø 63,5 = 2 1/2"
00100192	SMS Ø 76,2 = 3"



GASKET FOR S/S FITTINGS Guarnizione per raccordi inox	
00600270	DN 10/25
00600271	DN 32
00600272	DN 40
00600273	DN 50
00600274	DN 60
00656500	DN65
00600275	DN 80
00600276	DN 90/100

DIN



GASKET FOR S/S FITTINGS Guarnizione per raccordi inox	
00600277	SMS Ø 25,4 = 1"
00600278	SMS Ø 38,1 = 1 1/2"
00600279	SMS Ø 50,8 = 2"
00600280	SMS Ø 63,5 = 2 1/2"
00600281	SMS Ø 76,2 = 3"

SMS



S/S 90° EXPANDING BEND Curva inox 90° a mandrinare	
00141481	DN 32
00141482	DN 40
00141483	DN 50
00141484	DN 60
00141485	DN 65
00141486	DN 80
00141487	DN 100
00141488	Ø 38,1 = 1 1/2"
00141489	Ø 50,8 = 2"
00141490	Ø 63,5 = 2 1/2"
00141491	Ø 76,2 = 3"
00141492	Ø 101,6 = 4"



00300150

UNIVERSAL KEY FOR EXPANDING FITTINGS
 Chiave universale per raccordi a mandrinare

FITTING ALL MEASURES
 Utilizzabile con tutte le misure



90° EXPANDING BEND AVERAGE RADIUS =3D
 Curva a 90° RM=3D (largo raggio) con estremita' a mandrinare

	DN	D	S	R	U
00100860	1" 1/4	31,8	1,25	93	136
00100862	1" 1/2	38,1	1,25	115	140
00100864	40	40,0	1,25	120	170
00100866	2"	50,8	1,25	150	225
00100867	2"	50,8	1,50	150	225
00100868	50	52,0	1,25	150	225
00100873	2" 1/2	63,5	1,50	185	240
00100874	70	70,0	2,00	210	250
00100875	3"	76,2	1,65	215	250



S/S EXPANDING TEE
 Tee inox a mandrinare

00151581	DN 32	00151587	DN 100
00151582	DN 40	00151588	Ø 38,1 = 1 1/2"
00151583	DN 50	00151589	Ø 50,8 = 2"
00151584	DN 60	00151590	Ø 63,5 = 2 1/2"
00151585	DN 65	00151591	Ø 76,2 = 3"
00151586	DN 80	00151592	Ø 101,6 = 4"



CLAMPING LUGS FOR CUTTING TUBES
 Morsetto per taglio tubi

00282825	DIN 25 (28)
00282832	DIN 32 (34)
00282840	DIN 40 (40)
00282850	DIN 50 (52)
00282860	DIN 60 (60)
00282865	DIN 65 (70)
00282880	DIN 80 (85)
00282890	DIN 90 (93)
00282899	DIN 100 (106)
00292910	BS 1" (25,4)
00292915	BS 1 1/2" (38,1)
00292920	BS 2" (50,8)
00292925	BS 2 1/2" (63,5)
00292930	BS 3" (76,2)
00292935	BS 3 1/2" (88,90)
00292940	BS 4" (101,60)



S/S BUTTERFLY VALVE ON QUICK COUPLING
 Valvola a farfalla inox su raccordo rapido

00100629	1" 1/2= 38,1 mm
00100630	DN 40= 40 mm
00100631	2"= 50,8 mm
00100634	DN 50= 52 mm
00100632	2" 1/2= 63,5 mm
00100633	3"= 76,2 mm



VALVE FOR VACUUM LINE - PVC
 Valvola a ghigliottina pvc x linea vuoto

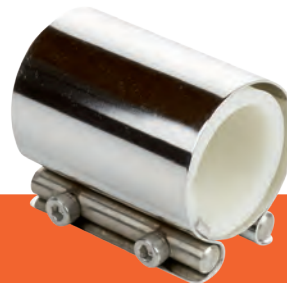
00100398	1" 1/2= 50 mm
00100399	2"= 63 mm
00100400	2" 1/2= 75 mm
00100401	3"= 90 mm
00100402	4"= 110 mm
00100403	1" 1/2 (imperial 48 mm)
00100404	2"= (imperial 60,3 mm)
00100405	3"= (imperial 88,5 mm)



TUBE EXPANDER WITH 5 ROLLS FOR S/S TUBES AND BENDS

Mandrino allargatubi a 5 rulli per tubi e curve in acciaio inox

00313100	DIN 25	00232300	BS 2"
00323200	DIN 32	00242400	BS 2 1/2"
00333300	DIN 40	00252500	BS 3"
00343400	DIN 50	00262600	BS 3 1/2"
00353500	DIN 60	00272700	BS 4"
		00363600	DIN 65
		00373700	DIN 80
		00383800	DIN 90
		00393900	DIN 100
		00212100	BS 1"
		00222200	BS 1 1/2"



COMPLETE S/S FITTING
 Raccordo rapido inox completo

Art. Diametro

WHITE GASKETS FOR S/S FITTING
 Guarnizioni bianche per raccordo rapido

00121197	Ø 31,75 mm	1 1/4"	L. 60 mm	20070320
00100197	Ø 34 mm		L. 60 mm	20070321
00100854	Ø 38,1 mm	1 1/2"	L. 60 mm	20070322
00100198	Ø 40 mm	DN 40	L. 60 mm	20070323
00100855	Ø 50,8 mm	2"	L. 60 mm	20070324
00100199	Ø 52 mm	DN 50	L. 60 mm	20070325
00100200	Ø 63,5 mm	2 1/2"	L. 80 mm	20070326
00100201	Ø 76,2 mm	3"	L. 80 mm	20070327
00100856	Ø 63,5 mm	2 1/2"	L. 100 mm	20070328
00100857	Ø 70 mm		L. 100 mm	20070329
00100858	Ø 76,2 mm	3"	L. 100 mm	20070330

TRI-CLAMP TRI-CLAMP	V-CLAMP FASCETTE	ROLL ON FERRULE TRONCHETTI	GASKET GUARNIZIONI
1" 1/2= 38,1 mm	00100457	00100640	20070118
40= 40 mm	00100458	00100641	20070119
2"= 50,8 mm	00100459	00100642	20070120
2" 1/2= 63,5 mm	00100460	00100643	20070121
3"= 76,2 mm	00100461	00100644	20070122



BRACKET WF TYPE
Supporto tipo WF

20090038 Ø 40
20090039 Ø 50



SUPPORT WF TYPE
Sostegno tipo WF

20090040 Ø 40
20090041 Ø 50



S/S NIPPLE Tubetto inox	Ø Int	Ø Est	L.
00100509	13	16	100
00100510	16	18	100
00100511	20	22	100
00100512	23	25	100

S/S PIPE SLIDE BRACKET - SUPPORTI INOX PER TUBAZIONI



00600187
L. 500 mm



HORIZONTAL
Orizzontali
00100754
L. 300 mm




VERTICAL
Verticali
00100755
L. 400 mm
00100756
L. 600 mm

STAINLESS STEEL CLAMPS - FASCETTE INOX PER SUPPORTO



For ref. / Per art. 00600187

00600188 For tube Ø 40
00600189 For tube Ø 52
00600190 For tube Ø 63
00600191 For tube Ø 70
00600192 For tube Ø 76



For ref. / Per art. 00100754-00100755-00100756

20070155 - 32-50 mm (1"1/4-1"1/2)
20070156 - 50-70 mm (2"-2"1/2)
20070157 - 62-80 mm (2"1/2-3")
20070158 - 80-100 mm (4")

PLASTIC CLAMP FOR BRACKET

Attacco plastica per supporto

- 20182750** 40 mm
- 20182751** 42 mm
- 20182752** 48.5 mm
- 20182753** 50 mm
- 20182754** 51 mm
- 20182755** 75 mm



20182756 PLASTIC CLAMP CROSS FIX SET

Set fissaggio
"A CROCE"



20182757 PLASTIC CLAMP STRAIGHT FIX SET

Set fissaggio
"DRITTO"



20182758 PLASTIC CLAMP RAIL FIX SET

Set fissaggio per
binario



20182759 PLASTIC CLAMP WALL FIX SET

Set fissaggio a muro



CLIP PLASTIC SADDLE CLAMP

Collare in plastica a clip

- 2018-9001** 50x1"
- 2018-9002** 50x1/2"
- 2018-9003** 75x1"
- 2018-9004** 75x1/2"
- 2018-9005** 90x1"
- 2018-9006** 90x1/2"





1



2



3



4



5



6

S/S MILK INLETS - Prese latte inox

Art.	Inlet / Nipplo (mm)	For Tube / Per tubo (mm)
1	00111382	14x16 Ø 38-40
1	00111383	14x16 Ø 50,8-52
1	00100382	16x18 Ø 38-40
1	00100383	16x18 Ø 50,8-52
1	00100384	16x18 Ø 63,5
1	00100385	16x18 Ø 76,2
1	00100801	20x22 Ø 38-40
1	00100802	20x22 Ø 50,8-52
1	00100803	20x22 Ø 63,5
1	00100804	20x22 Ø 76,2

WITH HOSE CLAMP - Con fascetta

Art	Inlet / Nipplo (mm)	For Tube / Per tubo (mm)
2	00121281	14x16 Ø 31-53
2	00121282	14x16 Ø 63-77
2	00121283	16x18 Ø 31-53
2	00121284	16x18 Ø 63-77
2	00121285	20x22 Ø 31-53
2	00121286	20x22 Ø 63-77
2	00121287	24x26 Ø 31-53
2	00121288	24x26 Ø 63-77

WITH BENT INLET 90° - Con tubo curvo 90°

Art	Inlet / Nipplo (mm)	For Tube / Per tubo (mm)
3	00100805	14x16 Ø 38-40
3	00100806	14x16 Ø 50,8-52
3	00100807	14x16 Ø 63,5
3	00100387	16x18 Ø 50,8-52

3	00100386	16x18 Ø 38-40
3	00100387	16x18 Ø 50,8-52
3	00100388	16x18 Ø 63,5
3	00100389	16x18 Ø 76,2
3	00100809	20x22 Ø 38-40
3	00100810	20x22 Ø 50,8-52
3	00100811	20x22 Ø 63,5
3	00100812	20x22 Ø 76,2

BENT INLET 90° WITH HOSE CLAMP - Tubo curvo 90° con fascetta

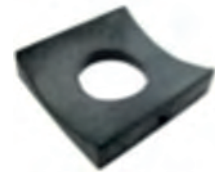
Art	Inlet / Nipplo (mm)	For Tube / Per tubo (mm)
4	00100821	14x16 Ø 31-53
4	00100822	14x16 Ø 63-77
4	00100823	16x18 Ø 31-53
4	00100824	16x18 Ø 63-77

BENT INLET 180° WITH HOSE CLAMP - Tubo curvo 180° con fascetta

Art	Inlet / Nipplo (mm)	For Tube / Per tubo (mm)
5	00100825	14x16 Ø 31-53
5	00100826	14x16 Ø 63-77
5	00100827	16x18 Ø 31-53
5	00100828	16x18 Ø 63-77

WITH BENT INLET 180° - Con tubo curvo 180°

Art	Inlet / Nipplo (mm)	For Tube / Per tubo (mm)
6	00100813	14x16 Ø 38-40
6	00100814	14x16 Ø 50,8-52
6	00100815	14x16 Ø 63,5
6	00100816	14x16 Ø 76,2
6	00100390	16x18 Ø 38-40
6	00100391	16x18 Ø 50,8-52
6	00100392	16x18 Ø 63,5
6	00100393	16x18 Ø 76,2
6	00100817	20x22 Ø 38-40
6	00100818	20x22 Ø 50,8-52
6	00100819	20x22 Ø 63,5
6	00100820	20x22 Ø 76,2



GASKET FOR MILK ENTRY

Guarnizione per presa latte

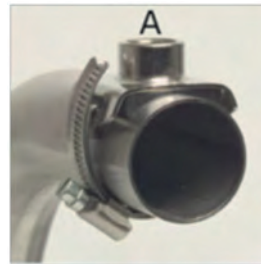
Ø 16	00100179	00111393
Ø 18	00100210	00111394
Ø 22	00100211	00111395
Ø 24-26		00111396



S/S TUBE CLIP WITH 1/2" NIPPLE

Morsetto stringitubo inox con tronchetto filettato 1/2"

00100540	DN 25 = Ø28
00100541	DN 32 = Ø34
00100542	DN 40 = Ø40
00100543	DN 50 = Ø52
00100544	DN 65 = Ø70
00100545	DN 80 = Ø80
00100546	DN 100 = Ø100



CLAMP MILK VALVE WITH THREAD (gasket included)

Presa latte inox dritta con filetto (guarnizione inclusa)

	Ø	A
00300130	32-51 mm	3/8"
00300131	32-51 mm	1"
00300132	60-80 mm	3/8"
00300133	60-80 mm	1"
00300134	80-100 mm	3/8"
00300135	80-100 mm	1"



PLASTIC TUBE CLAMP , SCREWS NOT INCLUDED, 1/2" THREAD

Morsetto in plastica per tubo, viti non incluse, filetto 1/2"

00300840	Ø 25.4 mm (1") - BLACK / NERO
00300841	Ø 38-40 mm (1 1/2") - BLACK / NERO
00300844	Ø 50 mm (2") - BLACK / NERO
00300845	Ø 63 mm (2 1/2") - BLACK / NERO
00300846	Ø 76 mm(3") - BLACK / NERO
00300847	Screws 28x6.2 mm, flat head- Viti 28x6.2 mm, testa piatta
00300848	Screws 28x6.2 mm, cross head - Viti 28x6.2 mm, testa a croce



PVC BOLT SADDLE WITH FEMALE THREAD

Collari per tubo pvc con filetto femmina

00300202	40 mm x 1/2"
00300203	40 mm x 1"
00300204	50 mm x 1/2"
00300205	50 mm x 1"
00300206	63 mm x 1/2"
00300207	63 mm x 1"
00300208	75 mm x 1/2"
00300209	75 mm x 1"
00300210	90 mm x 1/2"
00300211	90 mm x 1"

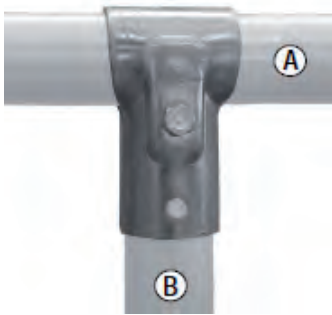


TUBE CLIP

Fascetta stringitubo

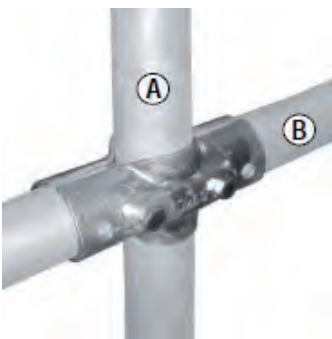
00100533	Ø25
00100534	Ø32
00100535	Ø40
00100536	Ø50
00100537	Ø63
00100538	Ø75
00100539	Ø90

T-CLAMP GALVANISED, 1 BOLT – Morsetto a “T” a 1 bullone



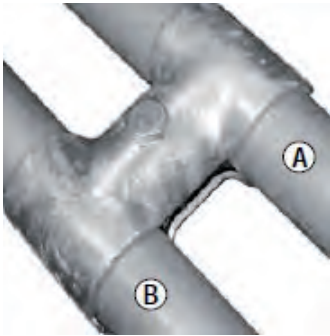
Ref.	Measures			N.	Bolts/Bulloni			Pack
	A	x	B		N.	Measures		
9010-0202	1/2	x	1/2	1	8	x	40	25
9010-0302	3/4	x	1/2	1	8	x	40	25
9010-0303	3/4	x	3/4	1	8	x	50	25
9010-0402	1"	x	1/2	1	8	x	40	25
9010-0403	1"	x	3/4	1	10	x	45	25
9010-0404	1"	x	1"	1	10	x	60	25
9010-0503	1"1/4	x	3/4	1	10	x	60	25
9010-0504	1"1/4	x	1"	1	10	x	60	25
9010-0505	1"1/4	x	1"1/4	1	10	x	70	25
9010-0506	1"1/4	x	1"1/2	1	10	x	80	25
9010-0603	1"1/2	x	3/4	1	10	x	50	25
9010-0604	1"1/2	x	1"	1	10	x	70	25
9010-0605	1"1/2	x	1"1/4	1	10	x	70	25
9010-0606	1"1/2	x	1"1/2	1	12	x	80	25
9010-0607	1"1/2	x	2"	1	12	x	90	10
9010-0704	2"	x	1"	1	10	x	70	25
9010-0705	2"	x	1"1/4	1	12	x	70	25
9010-0706	2"	x	1"1/2	1	12	x	90	10
9010-0707	2"	x	2"	1	12	x	90	10
9010-0708	2"	x	2"1/2	1	12	x	100	10
9010-0806	2"1/2	x	1"1/2	1	12	x	80	10
9010-0807	2"1/2	x	2"	1	12	x	100	10

CROSS 2 BOLTS – Crociera a 2 bulloni



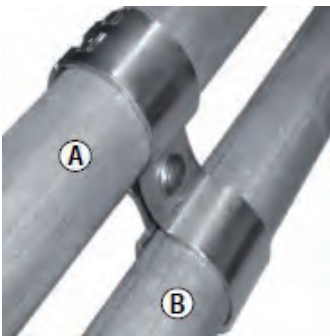
Ref.	Measures			N.	Bolts/Bulloni			Pack
	A	x	B		N.	Measures		
9160-0202	1/2	x	1/2	2	8	x	40	25
9160-0302	3/4	x	1/2	2	10	x	40	25
9160-0303	3/4	x	3/4	2	10	x	45	25
9160-0403	1"	x	3/4	2	10	x	45	25
9160-0404	1"	x	1"	2	10	x	50	25
9160-0504	1"1/4	x	1"	2	10	x	55	25
9160-0505	1"1/4	x	1"1/4	2	10	x	60	25
9160-0604	1"1/2	x	1"	2	10	x	55	25
9160-0605	1"1/2	x	1"1/4	2	10	x	60	10
9160-0606	1"1/2	x	1"1/2	2	12	x	70	10
9160-0705	2"	x	1"1/4	2	10	x	70	10
9160-0706	2"	x	1"1/2	2	12	x	70	10
9160-0707	2"	x	2"	2	12	x	90	10
9160-0806	2"1/2	x	1"1/2	2	12	x	80	10
9160-0807	2"1/2	x	2"	2	12	x	90	10

DOUBLE CLAMP – Morsetto doppio



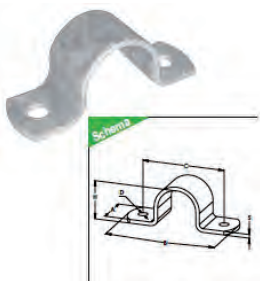
Ref.	Measures			N.	Bolts/Bulloni			Pack N.
	A	x	B		Measures			
9050-0303	3/4	x	3/4	1	10	x	45	25
9050-0403	1"	x	3/4	1	10	x	45	25
9050-0404	1"	x	1"	1	10	x	50	25
9050-0503	1"1/4	x	3/4	1	10	x	45	25
9050-0504	1"1/4	x	1"	1	10	x	55	25
9050-0505	1"1/4	x	1"1/4	1	10	x	60	25
9050-0603	1"1/2	x	3/4	1	10	x	45	25
9050-0604	1"1/2	x	1"	1	10	x	55	25
9050-0605	1"1/2	x	1"1/4	1	10	x	60	25
9050-0606	1"1/2	x	1"1/2	1	10	x	50	25
9050-0704	2"	x	1"	2	10	x	55	25
9050-0705	2"	x	1"1/4	2	10	x	60	25
9050-0706	2"	x	1"1/2	1	12	x	70	10
9050-0707	2"	x	2"	1	12	x	70	10

DOUBLE CLAMP, GRAFTED – Morsetto doppio graffato



Ref.	Measures			N.	Bolts/Bulloni			Pack N.
	A	x	B		Measures			
9051-4040	40	x	40	1	8	x	25	10
9051-4006	40	x	1"1/2	1	8	x	25	10
9051-5006	50	x	1"1/2	1	8	x	25	10

COLLAR CLAMP HEAVY MODEL – Cavallotto a collare pesante

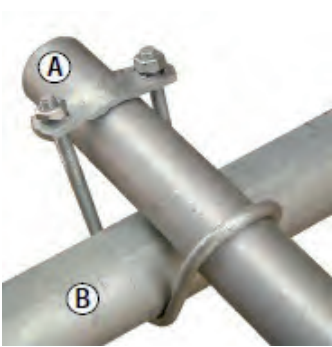


HEAVY/Pesante

Ref.	Measures	A	S	B	C	H	D
9220-0400	1"	40	4	95	71	28	8.5
9220-0500	1"1/4	40	4	120	89	38	11.0
9220-0600	1"1/2	40	4	130	95	43	13.5
9220-0700	2"	40	4	142	108	56	13.5
9220-0800	2"1/2	40	4	153	119	71	13.5
9225-0400	1"	25	4	95	71	28	8.5
9225-0500	1"1/4	25	4	121	90	38	10.5
9225-0600	1"1/2	30	4	145	106	43	10.5
9225-0700	2"	30	4	142	103	56	10.5
9225-0701	2"	30	3	142	105	55	10.5

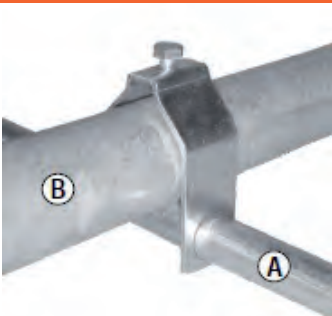
LIGHT/Leggero

WIRE CLAMP (OPEN) – Morsetto a filo (aperto)



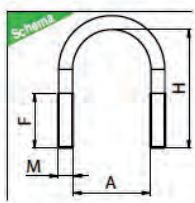
Ref.	Measures			N.	Bolts/Bulloni		Pack N.
	A	x	B		Measures		
9130-0202	1/2	x	1/2	2	M 8		100
9130-0204	1/2	x	1"	2	M 8		100
9130-0303	3/4	x	3/4	2	M 8		100
9130-0304	3/4	x	1"	2	M 8		100
9130-0305	3/4	x	1"1/4	2	M 8		100
9130-0404	1"	x	1"	2	M 8		100
9130-0405	1"	x	1"1/4	2	M 8		100
9130-0406	1"	x	1"1/2	2	M 8		100
9130-0407	1"	x	2"	2	M 8		100
9130-0505	1"1/4	x	1"1/4	2	M 10		50
9130-0506	1"1/4	x	1"1/2	2	M 10		50
9130-0507	1"1/4	x	2"	2	M 10		50
9130-0606	1"1/2	x	1"1/2	2	M 10		50
9130-0607	1"1/2	x	2"	2	M 10		50
9130-0608	1"1/2	x	2"1/2	2	M 10		50
9130-0706	2"	x	1"1/2	2	M 10		50
9130-0707	2"	x	2"	2	M 10		50

CRISSCROSS CLAMP – Morsetto incrociato



Ref.	Measures			N.	Bolts/Bulloni			Pack N.
	A	x	B		Measures			
9110-0204	1/2	x	1"	1	8	x	20	50
9110-0205	1/2	x	1"1/4	1	8	x	20	50
9110-0206	1/2	x	1"1/2	1	8	x	20	50
9110-0207	1/2	x	2"	1	8	x	20	50

THREADED CLAMP – Cavallotto a filo



Ref.	Measures	M	A	H	F
9239-0400	34	M8	37	81	45
9239-0500	40-42	M8	44	90	45
9239-0600	48-52	M8	52	100	45
9239-0700	60-64	M8	64	108	45
9239-0800	76	M8	70	128	40

WALL BRACKET – Supporto scorrevole a muro



Ref.	Measures
9316-0100	100
9316-0150	150
9316-0200	200
9316-0250	250
9316-0300	300
9316-0350	350
9316-0400	400
9316-0500	500

CRISSCROSS CLAMP – Morsetto incrociato



Ref.	Measures	Bolts/Bulloni				Pack
		N.	Measures			N.
00111843	1/2	1	10	x	25	10
00111844	3/4	1	10	x	25	10
00111845	1"	1	10	x	25	10
00111846	1"1/4	1	10	x	25	10
00111848	1"1/2	1	10	x	25	10
00111849	2"	1	10	x	25	10



00100843
S/S WALL BRACKET WITH TUBE 1/2"
 Supporto a muro inox



80006531
SPRING FOR SEQUENTIAL GATE, LEFT
 Molla x cancello sequenz. Sx
 Corr. DL 4780006531

80006532
SPRING FOR SEQUENTIAL GATE, RIGHT
 Molla x cancello sequenz. Dx
 Corr. DL 4780006532



3400016
DRAIN VALVE
 valvola drenaggio 1/2"

3400017
DRAIN VALVE
 valvola drenaggio 3/4"



00100216
DRAIN VALVE 3/8" DL TYPE
 Valvola di drenaggio 3/8" tipo DL
 corr. 96371680



20090042
RUBBER DRAIN VALVE DL TYPE
 Valvola drenaggio in gomma tipo DL
 corr. 957845-01



20090043
BRASS DRAIN VALVE, 1/2" BSP
 Valvola drenaggio in ottone 1/2" BSP



20090044
DRAIN VALVE WF TYPE
 Valvola drenaggio tipo WF
 corr. 7047-1935-010
 corr. Fw 067556 (744111)



50000338
DRAIN PLUG Ø14
 Valvola spurgo ø14
 CORR. GM 381127



00800159
DRAIN VALVE
 Valvola drenaggio
T. DAIRYMASTER JT 302
 corr. 10480127

PLASTIC FITTINGS FOR DIFFERENT SOLUTIONS - RACCORDI IN PLASTICA PER USI DIVERSI



BEND - Gomito

00100515 1/2" - 1/2"
00100516 1/2" - 3/4"



CROSS - Croce

00100517 1/2"



CONNECTION RUBBER
 Portagomma
00100518 1/2"-3/8"

* especially suggested for assembling trolley milking machines- * soprattutto indicati per l'assemblaggio delle mungitrici carrellate



18-110763
PIPE UNION PVC Ø63
Bocchettone PVC Ø63 mm



PVC BEND
Curva PVC
18-110102 50 MM
18-110103 63 MM



PVC TEE
TEE PVC
18-110247 50 MM
18-110248 63 MM



PVC MANIFOLD
Manicotto PVC
18-110618 50 MM
18-110619 63 MM
18-110306 63/50 MM
18-110305 63/40 MM
18-110304 50/40 MM